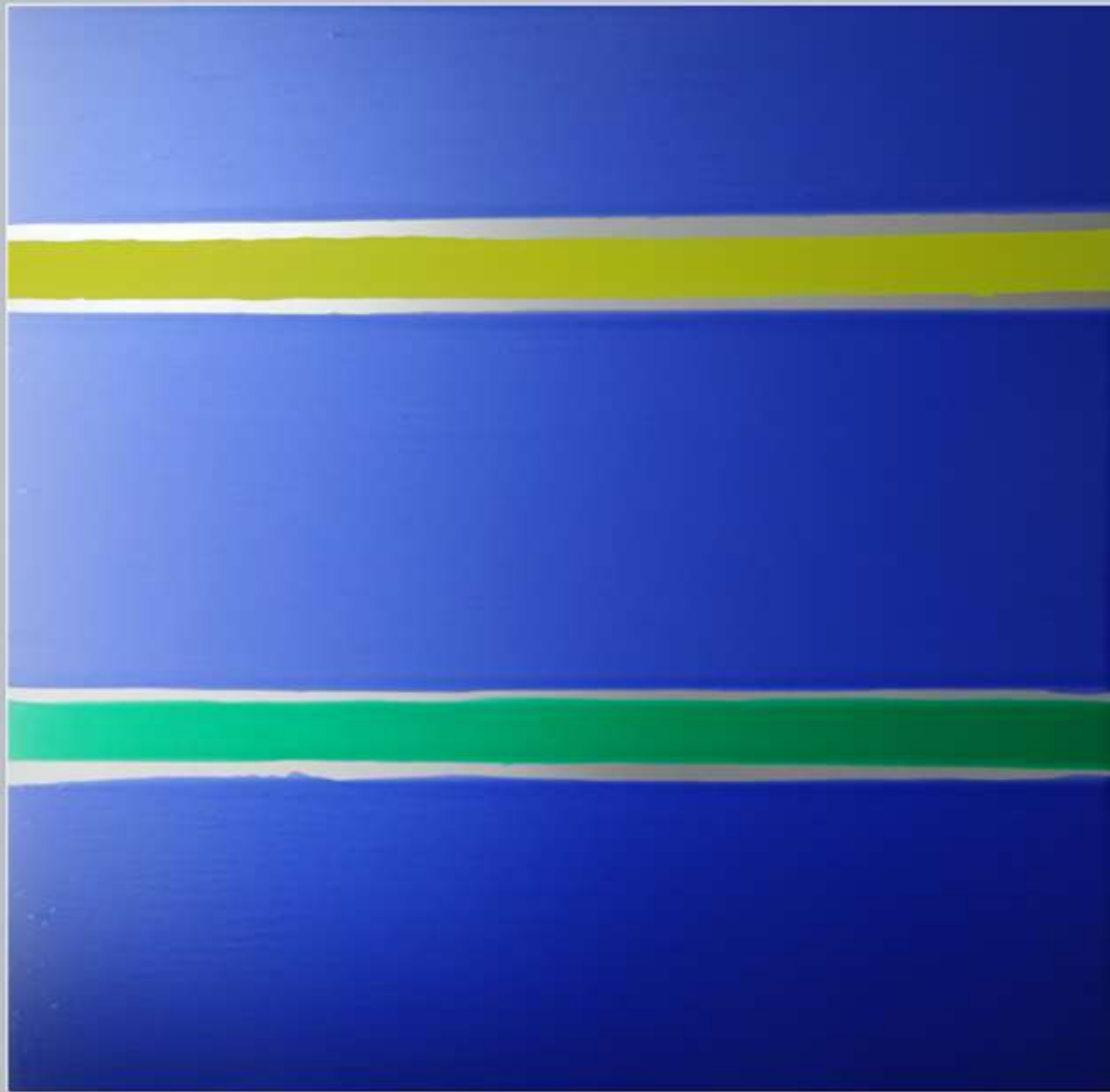


PAINTINGS BY JULIA BROOKER



Oita Prefecture Art Museum, Japan





Sweetie 2 acrylic on aluminium 125cm x 125cm

I love colour - and choosing which ones to put together. It makes me excited. When I was a child I went to the small dark sweet shop and was mesmerised by the rows of sweets jewel- like in their shiny wrappings. I wanted them all.



It was only when I finished this painting that I saw how it resembles the old fashioned cellular wool blankets of my childhood. I find its neat repetitions comforting. I hope the viewer will enjoy the tiny accidental droplets that fall.



Baby Blanket acrylic & graphite on aluminium 125cm x 125cm



Detail of Baby Blanket





Betula is the Latin name for the silver birch tree - my favourite. The slim black & white uprights, the slithers of light between them, the fluttering light and shadow of the delicate leaves. If I had a big garden I would plant a silver birch wood.

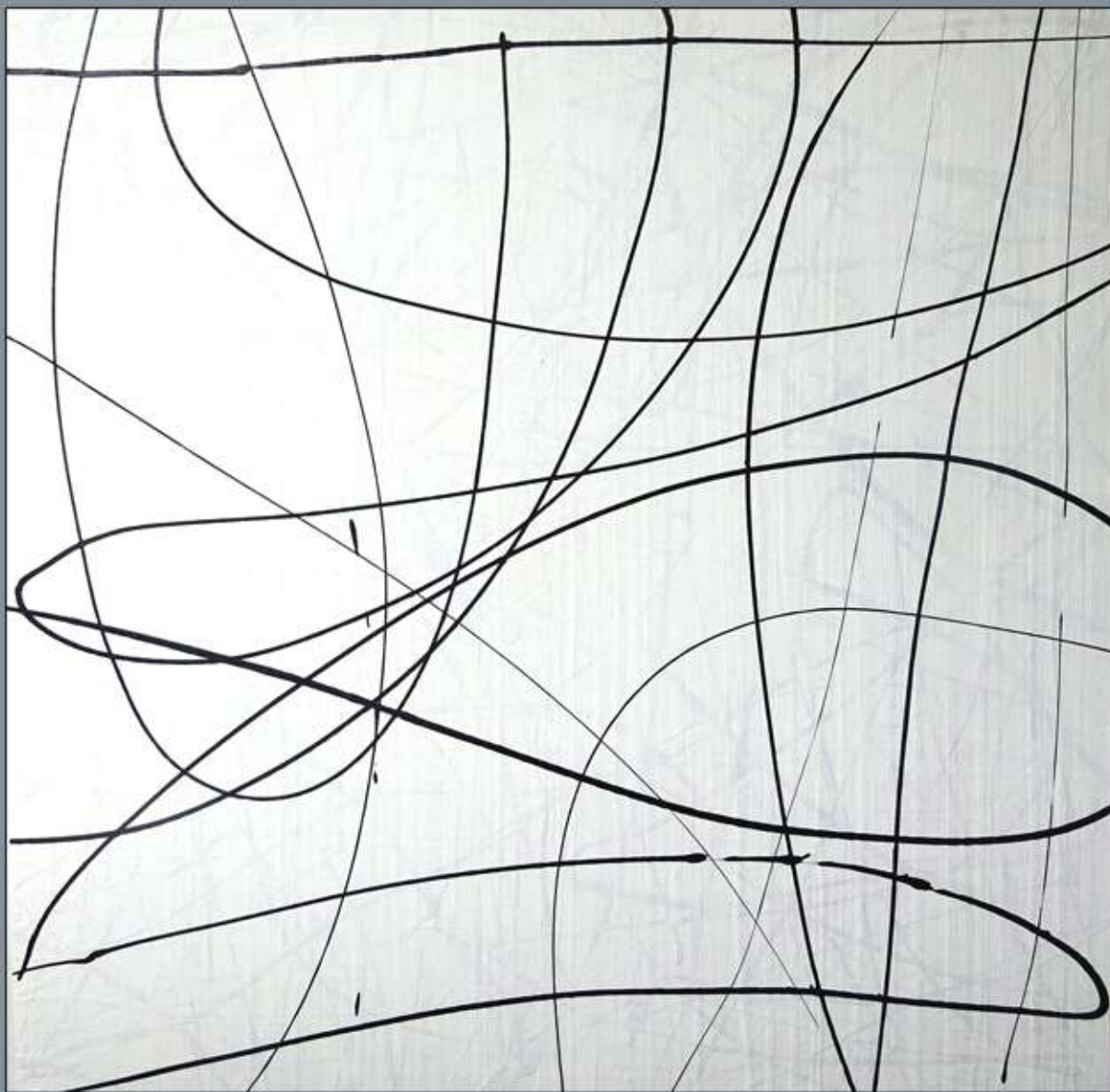
Betula acrylic on aluminium 125cm x 125cm



Detail of Betula

OPAM is a beautiful contemporary building designed by architect Shigeru Ban. He was inspired by the local bamboo crafts and this can be seen in the architecture of this huge light and airy museum.





Vital Signs is contradictory. Below the surface you can see its history of fraught lines & ragged textures. At the same time, the most recent layer has a vaulting free-wheeling confidence; and as such is a vital sign of good health.

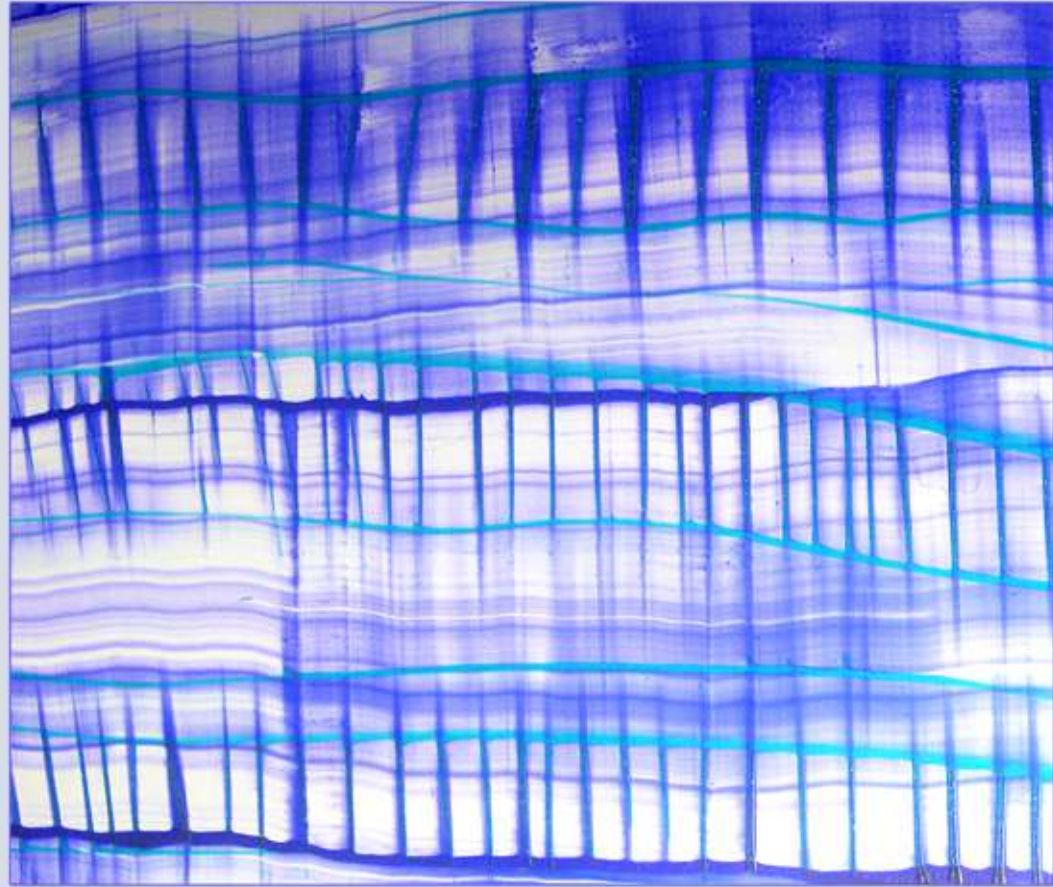
Vital Signs acrylic on aluminium 125cm x 125cm





Fabric is alluring to me, so soft and sumptuous. As a teenager I first visited the London Liberty store. I was overwhelmed by the floor to ceiling shelves of gleaming silk. I enjoy the craft of making, the accumulation of knowledge of your materials, finding new ways to manipulate the paint.

Gossamer acrylic on aluminium 125cm x 125cm



Gossamer Detail

Detail of Gossamer



0017



0018



0019



My dissertation was on beauty, colour and decoration in British painting. Colour in European art has always been thought inferior to form. I passionately maintain my unfashionable, belief in the human need for beauty. And I am driven in my attempt to make paintings that make time stand still for a few moments."



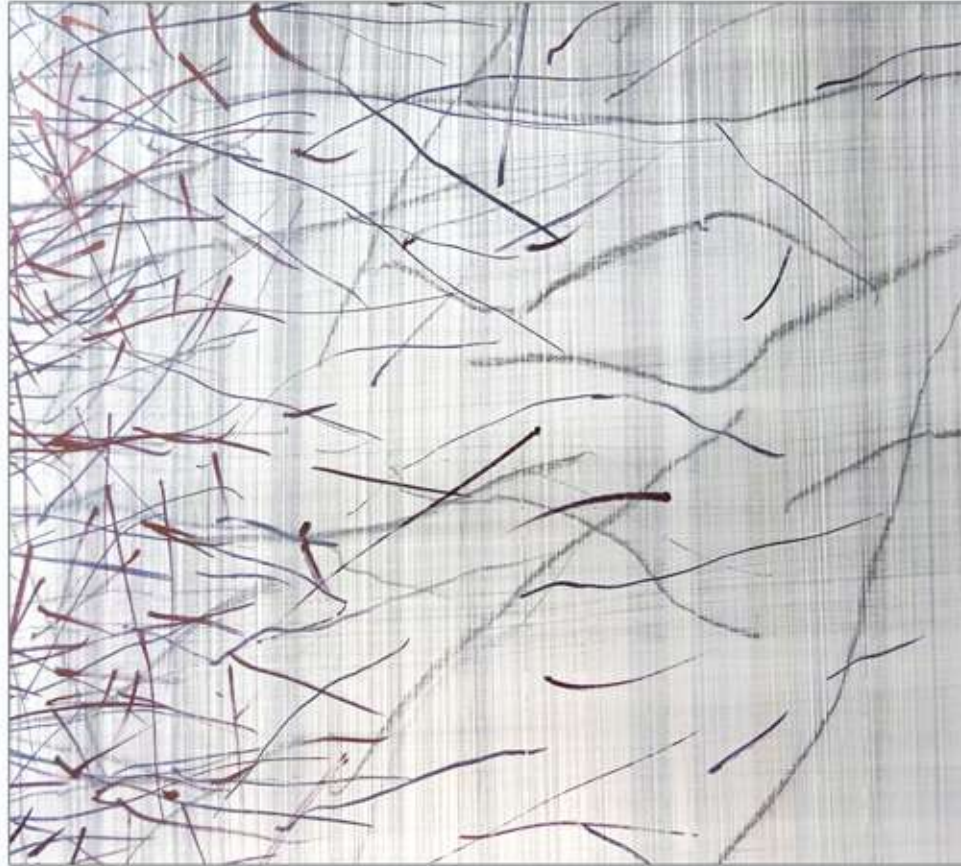
Sweetie I acrylic on aluminium 125cm x 125cm





'Flight' is about escaping from being trapped. In art college I spent one week on a 6 foot high charcoal drawing. The physicality of drawing life size was exhilarating and affecting and unexpected. It is cleansing and has become my way to reconnect with buried emotion.

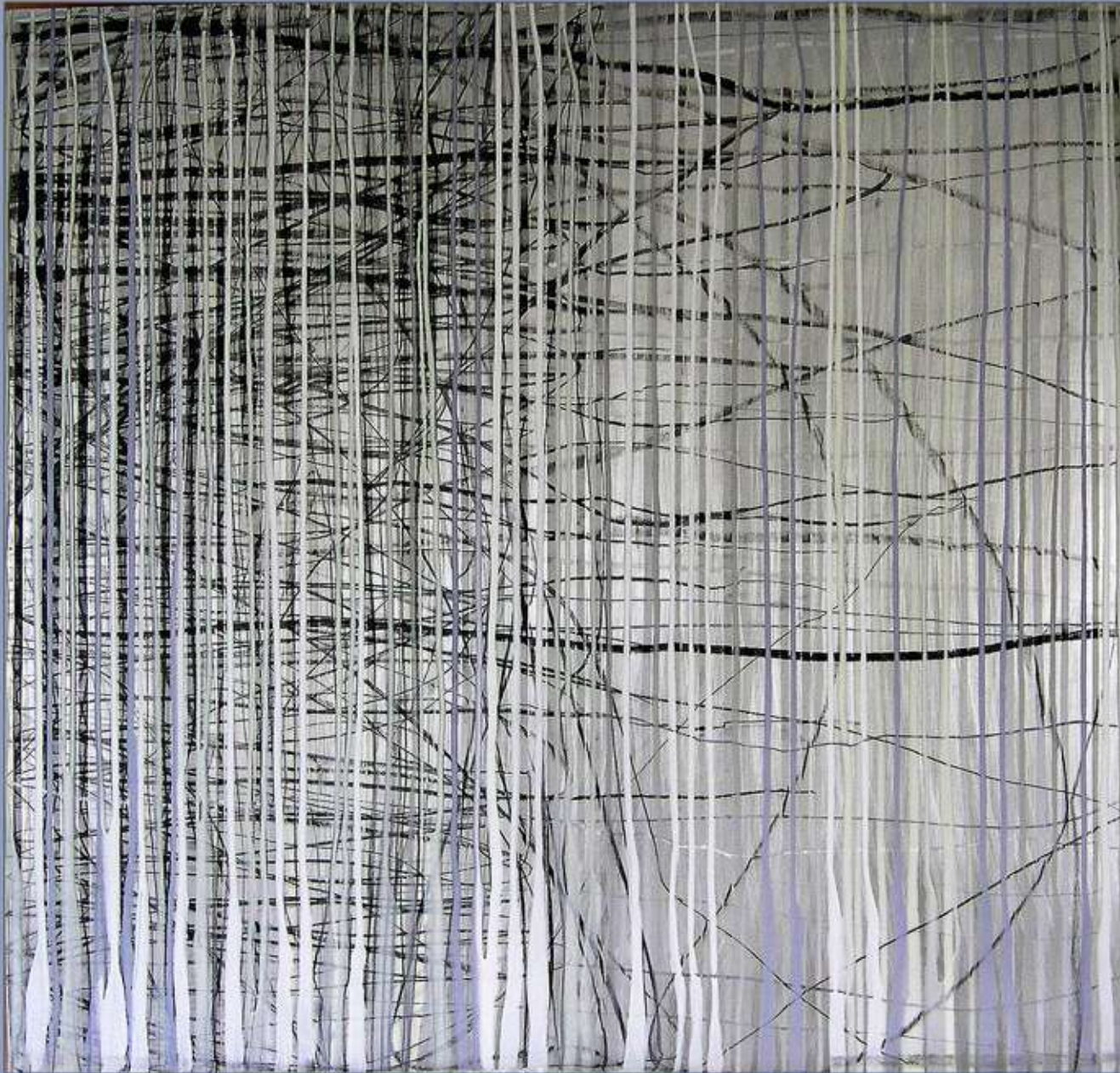
Flight graphite, ink & acrylic on aluminium 125cm x 125cm



Detail of Flight

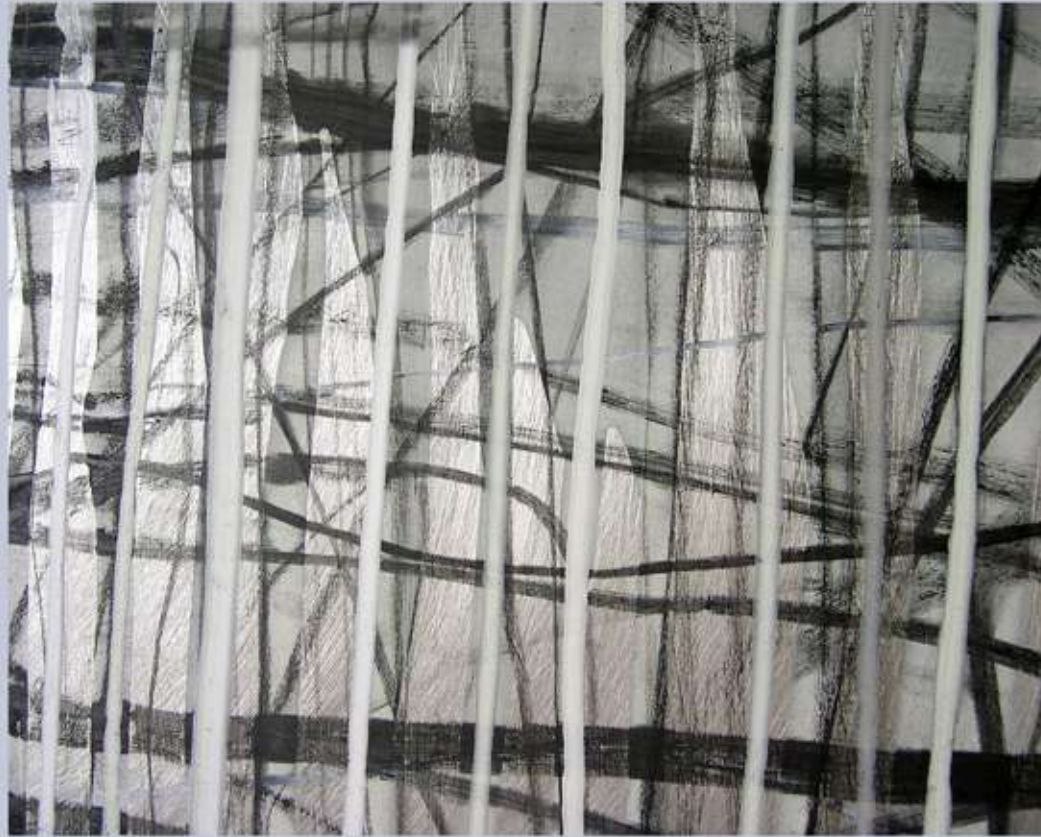






Forest 125cm x 125cm graphite & acrylic on aluminium

My earliest memory of drawing is being five years old. I wanted to draw a dark fairy tale wood. I had infants' crayons, all wax and no colour and I could not make the powerful scene in my mind. The primitive dangerous place, I wanted to record then, is in this work.



Detail of Forest 1

Julia Brooker graduated with a first class degree in Fine Art Painting in 2000. She has an international reputation for her paintings on aluminium panels. Her paintings are beautiful, elegant and deceptively simple. Julia says "I fell in love with aluminium and how it reflects light through transparent layers of colour." Julia was delighted to be invited to exhibit her paintings at OPAM. It is a dream come true and a great honour. See more paintings and details at

www.juliabrooker.com

