

# Probate 2021 financial report



## TARGETS

- Probate function is self-financing
- Meet/beat target funding for the compensation scheme
- Financial surplus funds initial investment
- ICAEW reserves meet authorising/licensing body requirement

2021



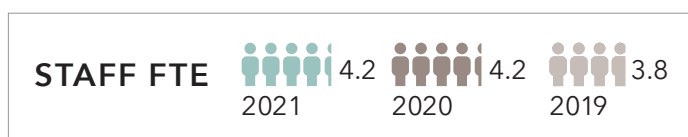
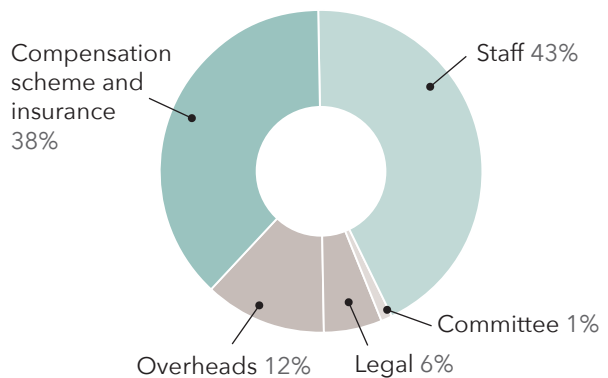
## REGISTRATION STATISTICS



## FINANCIAL ANALYSIS



## EXPENDITURE ANALYSIS



### Financial notes

- Total income includes levies for the compensation scheme. • Total expenditure includes transfers to the compensation scheme. • 2021 net result represents the targeted return over time of the initial investment funding. • Committee members who are non-chartered accountants receive a meeting allowance of £350/meeting.
- The chair of the committee receives an allowance of £700/meeting. Total allowance paid to the chair in 2021 was £700. • FTE: Full time equivalent.
- Further financial information is available as part of the ICAEW financial statements and annual report.