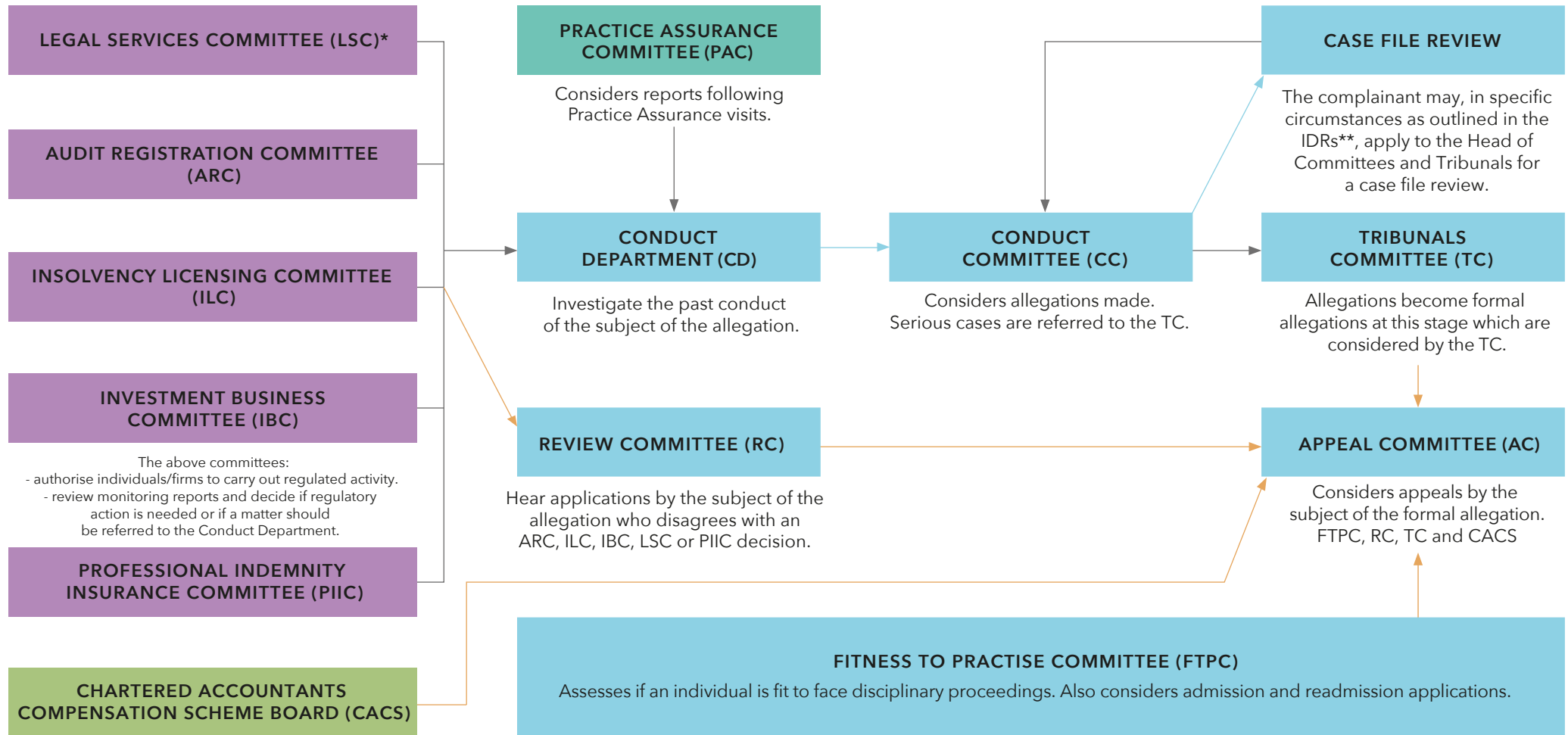


# ICAEW REGULATORY AND DISCIPLINARY COMMITTEES



The 'subject of the allegation' is defined as the member, firm, affiliate, provisional member or relevant person.

- ICAEW regulatory and disciplinary committees process
- Subject of the allegation does not accept the outcome
- Complainant requests case review

\* Appeals relating to legal services will be referred to the General Regulatory Council of the First Tier Tribunal and not to the Appeal Committee. \*\* Investigation and Disciplinary Regulations

