



CHARITY COMMISSION
FOR ENGLAND AND WALES

Charity Fraud & Cybercrime – Identifying risks, challenging perceptions

**Alan Bryce, Head of Counter Fraud & Cybercrime
Charity Commission for England & Wales**

20th October 2020



Charity Fraud & Cybercrime - agenda

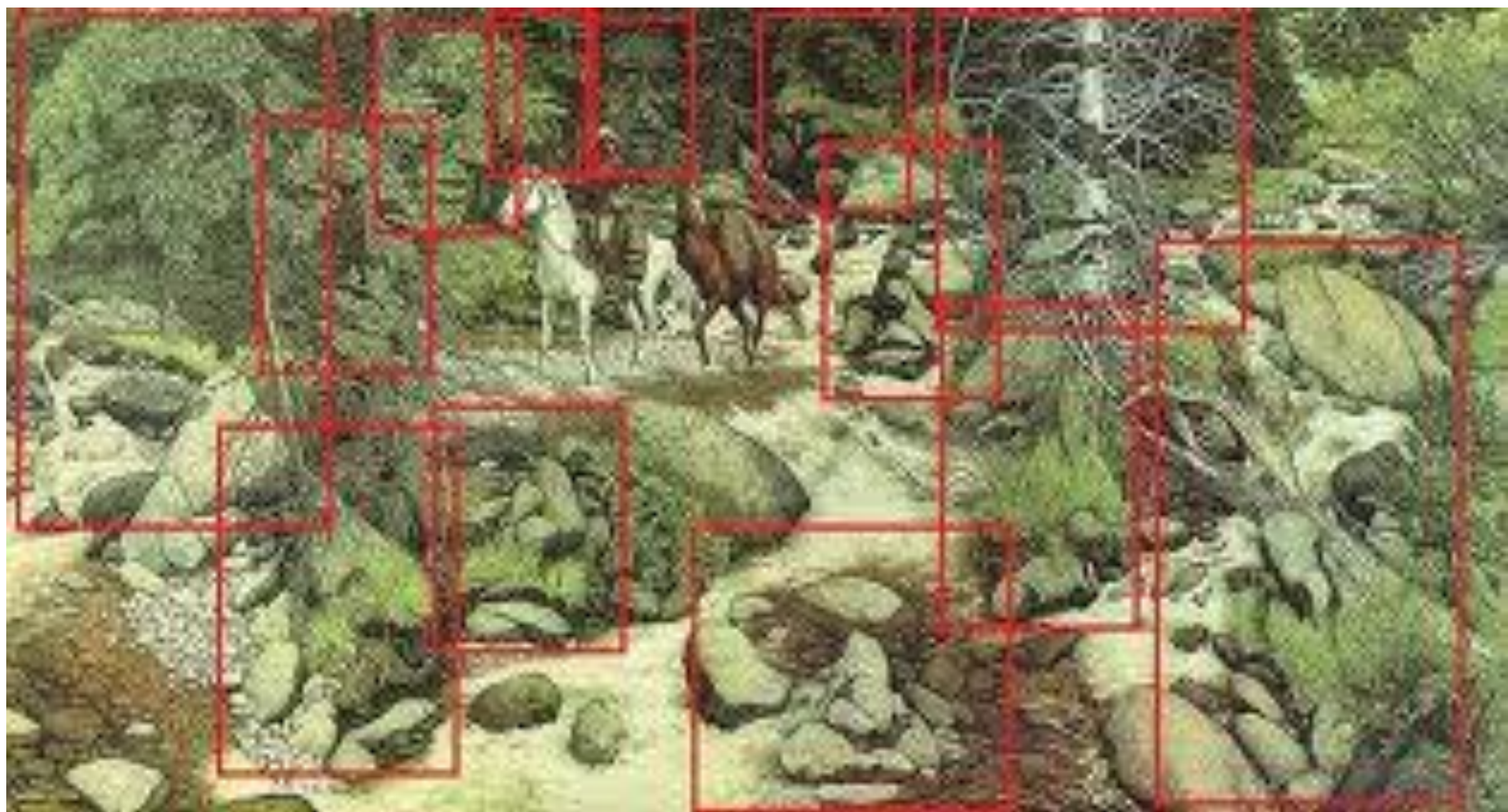
- *Preventing Charity Fraud* – Headline findings (& a bit more)
- Covid 19 scams
- *Preventing Charity Cybercrime* – a few key messages
- Support & guidance
- Any questions?



A little about me....

- **Head of Development, Counter Fraud & Cybercrime, Charity Commission**
- **Former Head of Counter Fraud, Audit Commission**
- **MSc Counter Fraud & Counter Corruption**
- **Formerly CIPFA**
- **Police officer, Glasgow**







- **In partnership with Fraud Advisory Panel**
- **Representative voluntary survey of 15,000 English & Welsh charities**
- **“Outstanding” 22% response rate – representative, statistically significant findings**
- **Largest ever charity specific survey on fraud (and cybercrime)**
- **Survey of both charity’s perceptions and most recent cases**



Encouraging changes in the last ten years

- **69% of charities think fraud is major risk to the charity sector (51% in 2009)**
- **33% think fraud is greater risk to the charity sector than other sectors (25% in 2009)**



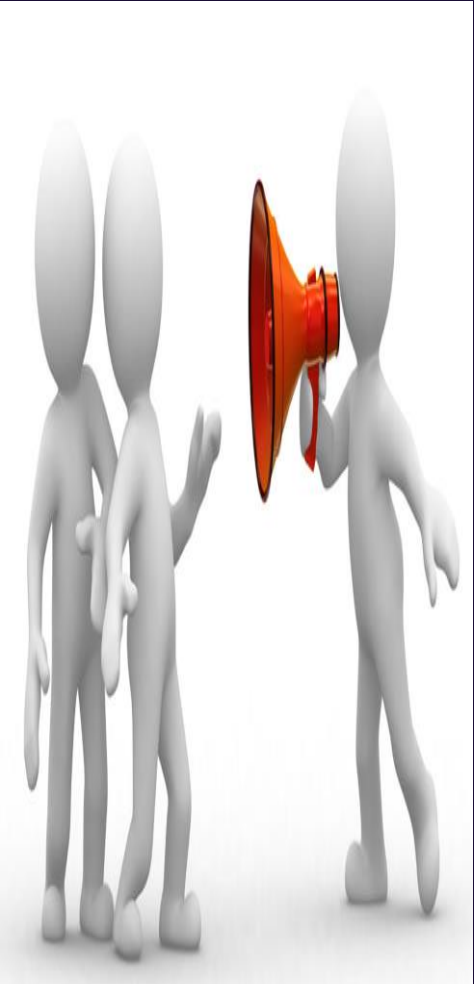


Perception of fraud risk (part 2)

85% think they do everything they can to prevent fraud, such as:

- **30% have a whistleblowing policy (18% in 2009)**
- **9% have a fraud awareness training programme (4% in 2009)**

BUT 48% have none of the good practice policies and protections in place

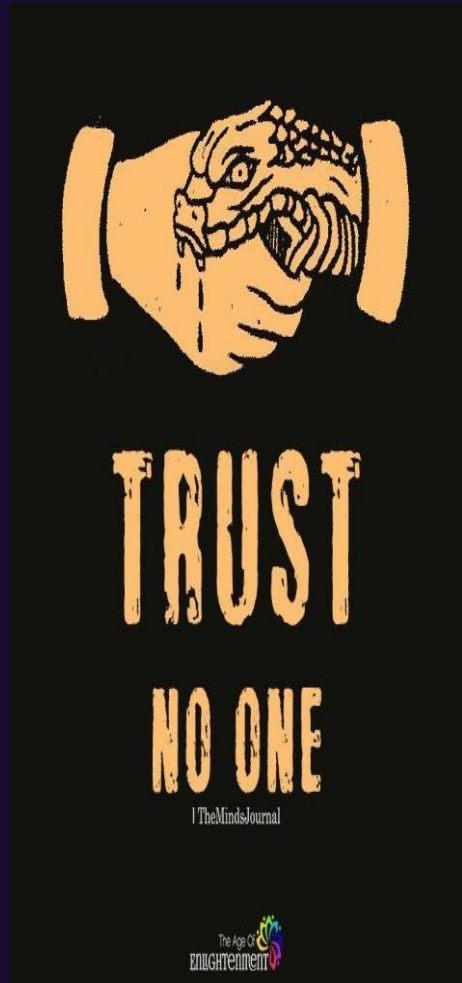




REASONS charities potentially vulnerable to fraud (could choose more than 1 vulnerability):

- 28% lack of fraud awareness training
- 26% over reliance on trust and goodwill
- 22% excessive trust in one or more individual
- 5% failure to apply internal controls
- 5% absence of internal controls

BUT nearly half believe not vulnerable to any of most common fraud enablers





Vulnerability to common TYPES of charity fraud (could choose up to 3):

- 21% internal fraud
- 20% external fraud
- 14% fundraising fraud
- 8% beneficiaries fraud

BUT 34% believe not vulnerable to any of most common charity fraud types





Fraud cases

How was the fraud discovered:

- 66% by internal controls or audit
- 17% by whistleblowing
- 9% by accident
- 6% by data matching



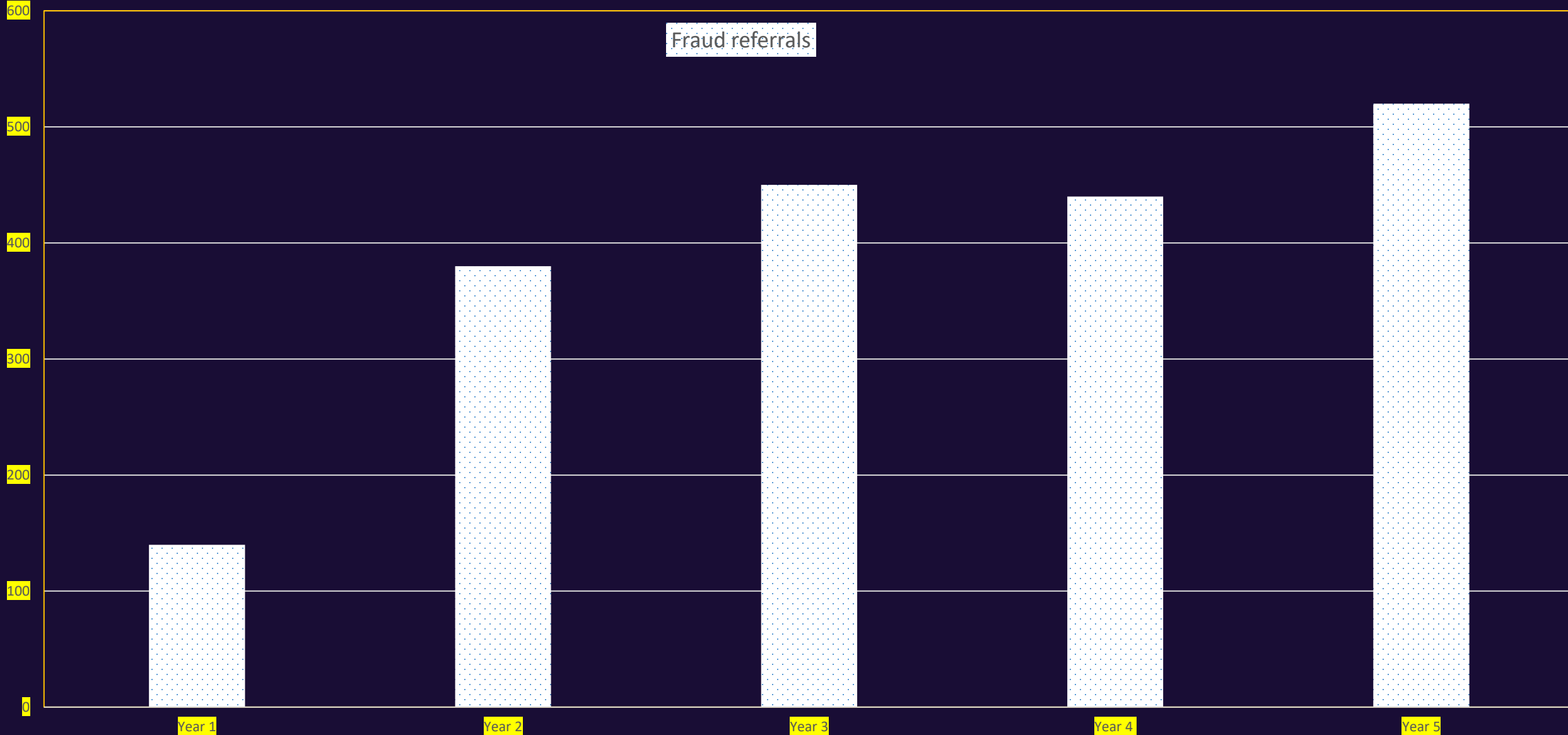
Reporting fraud:

- 42% reported to the police (51% in 2009)
- 29% to the Charity Commission (10% in 2009)

BUT 33% did not report to any external organisation (24% in 2009)



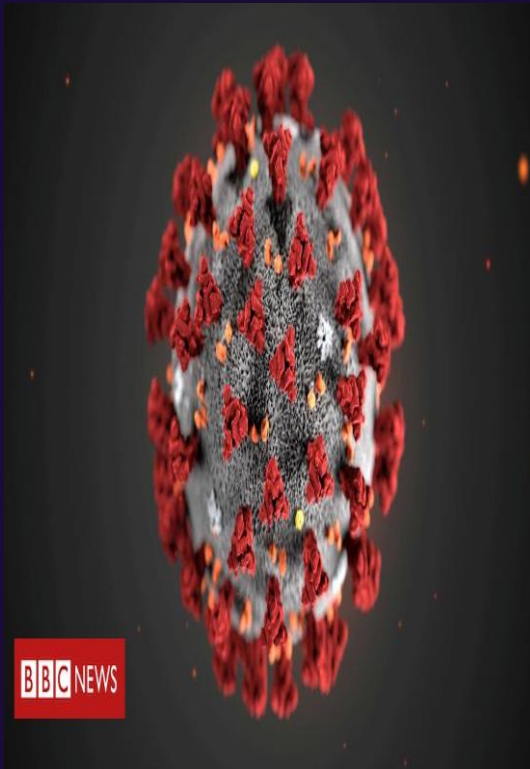
Adopting good practice works - Fraud Referrals





Covid 19 scams

- Any new scams?
- Instead Covid 19 is just the “hook” on which scammers rely/ linked to changing control environment
- Mandate /CEO fraud/ payment diversion frauds, procurement (PPE), phishing, grants, ransomware
- 2021 – Insider fraud?





Charity Cybercrime – perceptions (part 1)



- **58% stated the cybercrime is a major risk to the charity sector**
- **22% believe it is a greater risk to charities than public or private sectors**
- **Large charities generally more likely to appreciate risk of cybercrime**



- **39% phishing/malicious emails greatest threat**
- **15% hacking/extortion**
- **2% Distributed Denial of Service attacks (DDoS)**
- **Over third of charities don't know which type of cyber-attacks they're most vulnerable to**



Identified by :

- 30% internal IT controls
- 26% staff raising a concern
- 23% by accident
- 13% by a source external to the charity

Reporting

- 84% to the charity Board
- 29% reported to the police
- 13% to the Charity Commission

BUT 32% did not report to any external organisation





Guidance

- **Charity Fraud Awareness Week hub**
- **Free helpsheets, webinars, case studies and live Q&As**
- ***Protect your charity from fraud and cybercrime web page***
- **Use the checklists – *Preventing Charity Fraud* and *Preventing Charity Cybercrime* reports**
- **Adopt *Tackling Charity Fraud – Eight Guiding Principles***
- **NCSC web site – *Small Charity Guide* and *The Board Toolkit***





CHARITY COMMISSION
FOR ENGLAND AND WALES

International Charity Fraud Awareness Week 2020

- 19th – 23rd October 2020
- Supporters information packs (September)
- Social media messaging
- Information hub – guidance , good practice
- E-learning toolkit

***Now more than ever.... Charity
Fraud Out***





- **To the Charity Commission (RSIs)**
- **To Action Fraud (0300 123 2040)**
- **ICO (where appropriate, within 72 hours)**
- **Bank, funding body (grants), other regulators**

New (covid 19 cyber attacks)

- **SERS** – [Suspicious Email Reporting Service \(SERS\)](#)
- **Cyber Aware** [Cyber Aware hub site](#)
- **Video conferencing** [Video conferencing: new guidance for individuals and organisations \(BLOG POST\)](#)
- **CC regulatory alert (April and May)**
- **Webinar on covid 19 scams (May)**